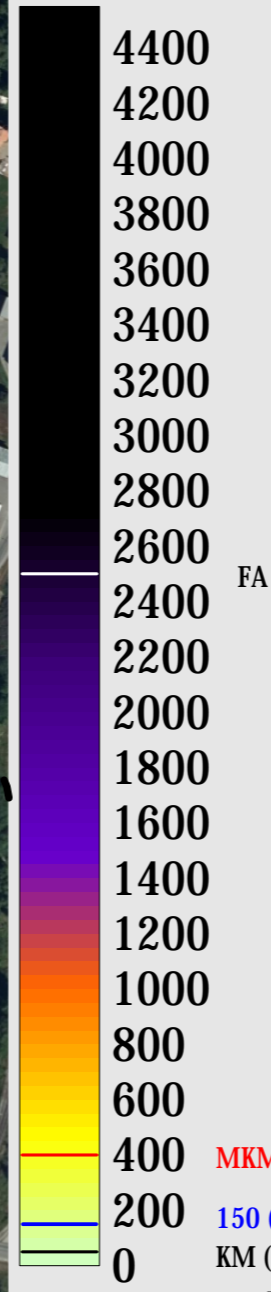


# Ulriksfors f.d. sulfittfabrik

Pb 0-0,5m



FA


--- Gamla järnvägsspår

 Tidigare sanerat område

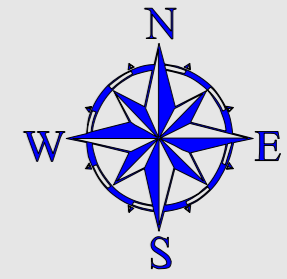
400 MKM (PSRV E01,E04)

200 150 (PSRV E02)

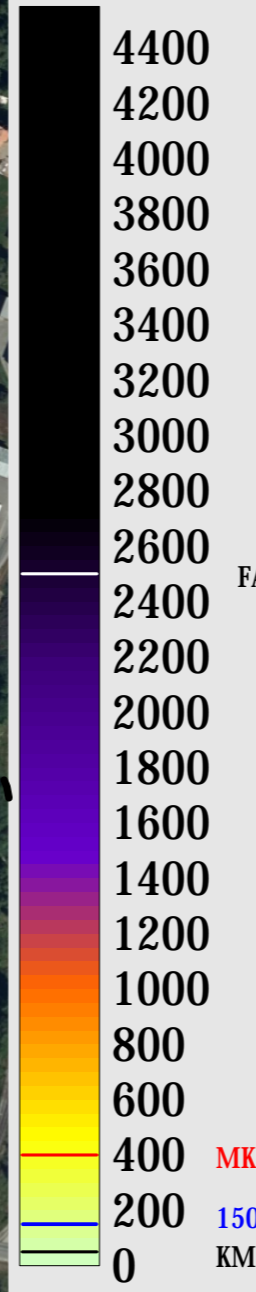
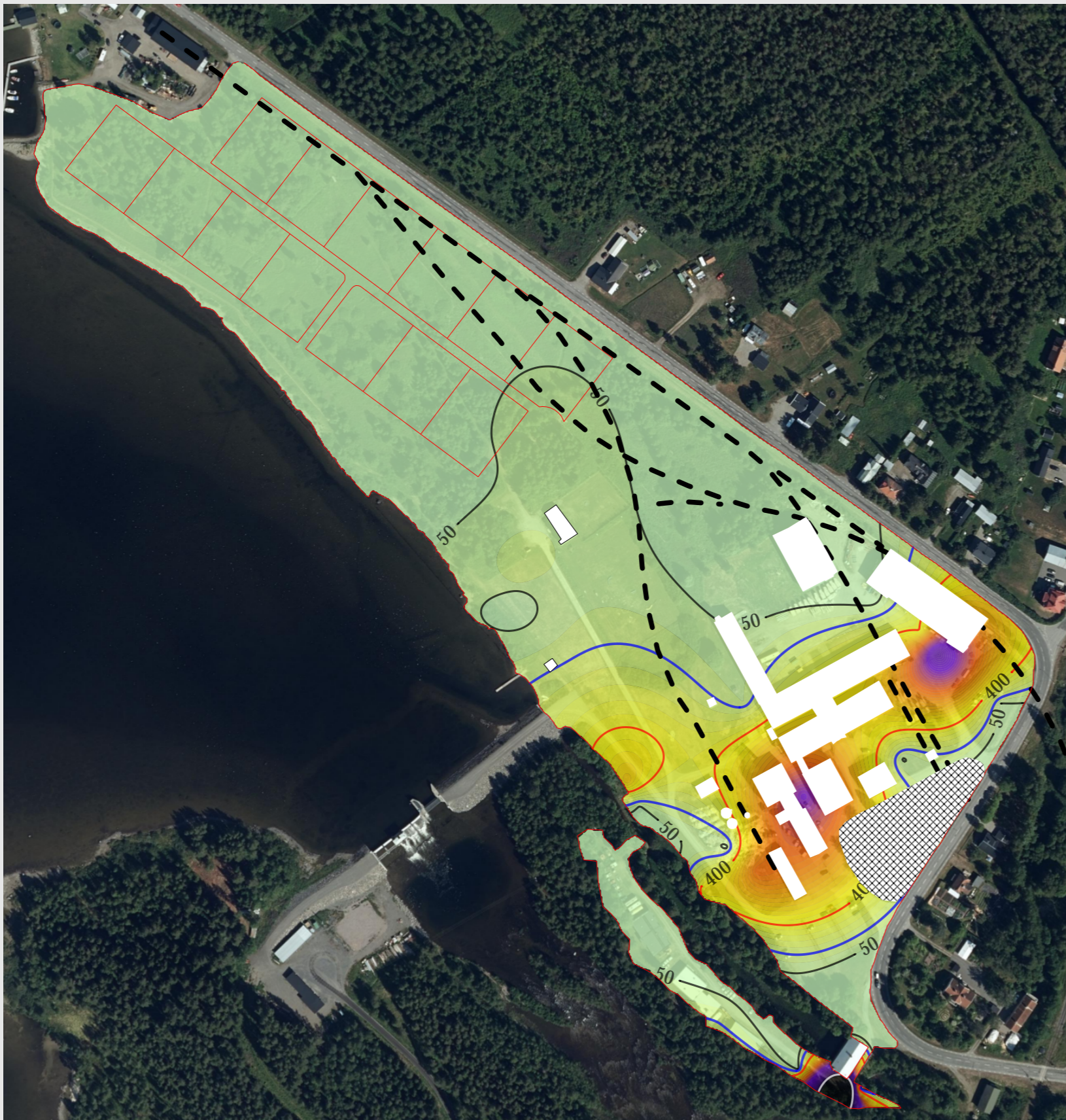
0 KM (PSRV E03)

	Projektnummer:
	Beställare: Strömsund kommun
Skala 1:3 000	Koordinatsystem: SWEREF 99 TM
	Provtagningsdatum:
2021-05-03 Peder Englund	Höjdsystem: RH2000

# Ulriksfors f.d. sulfittfabrik




Pb 0,5 m och djupare



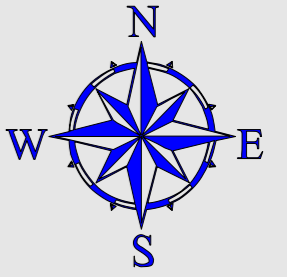
400 MKM (PSRV E01,E04)  
200 150 (PSRV E02)  
0 KM (PSRV E03)

--- Gamla järnvägsspår

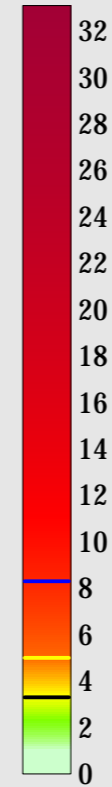
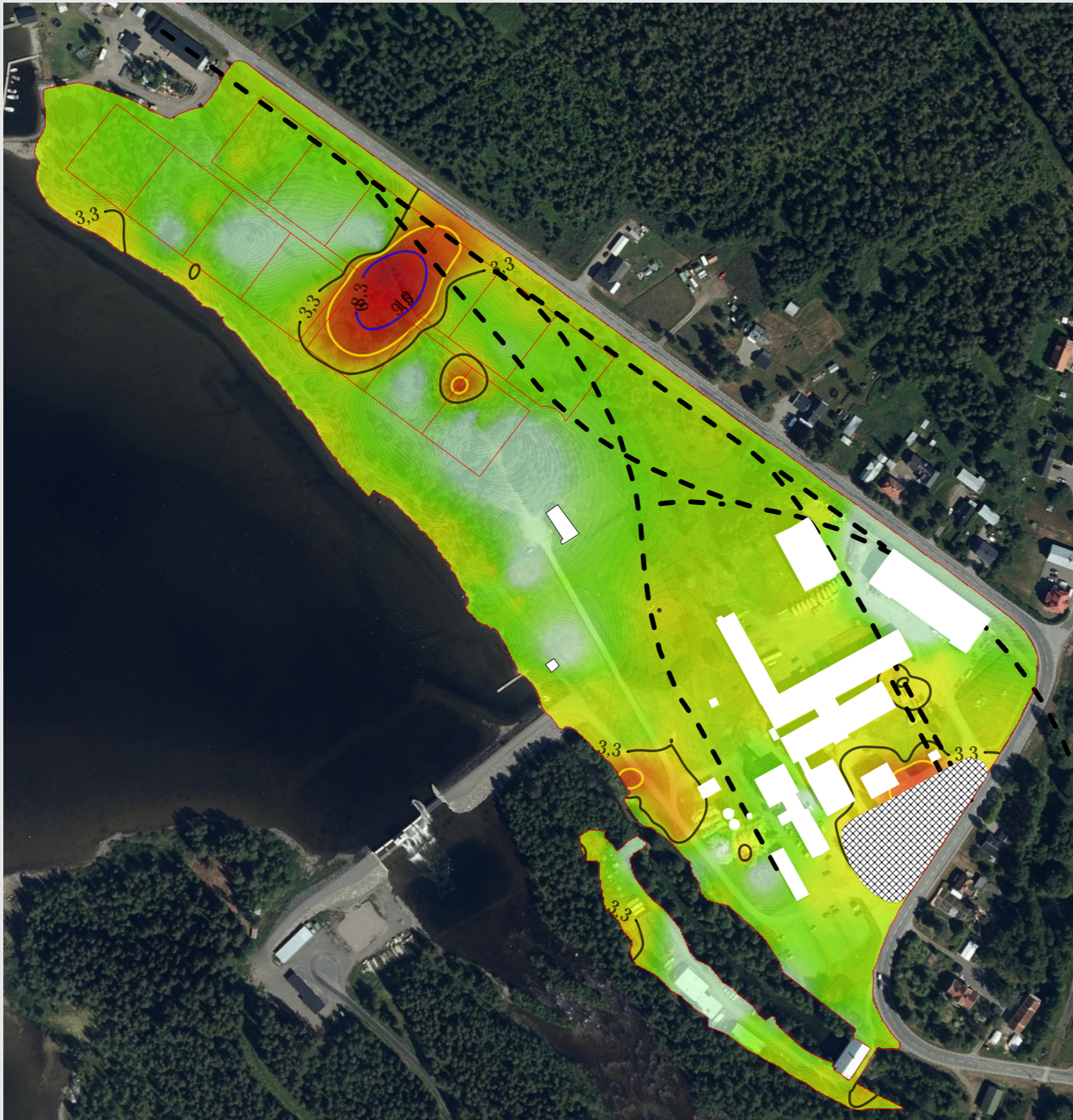
 Tidigare sanerat område

	Projektnummer:
	Beställare: Strömsund kommun
Skala 1:3 000	Koordinatsystem: SWEREF 99 TM
	Provtagningsdatum:
2021-05-03 Peder Englund	Höjdsystem: RH2000

# Ulriksfors f.d. sulfittfabrik




As(kvadratrot) 0-0,5 m

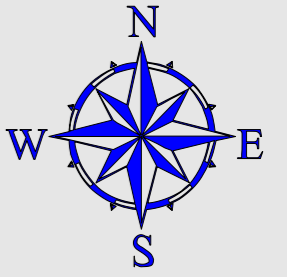


(PSRV E01)  
MKM(PSRV E04)  
KM (PSRV E02,E03)

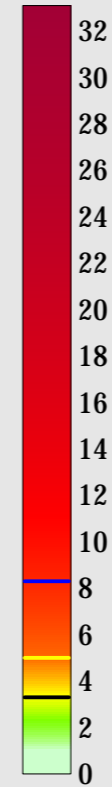
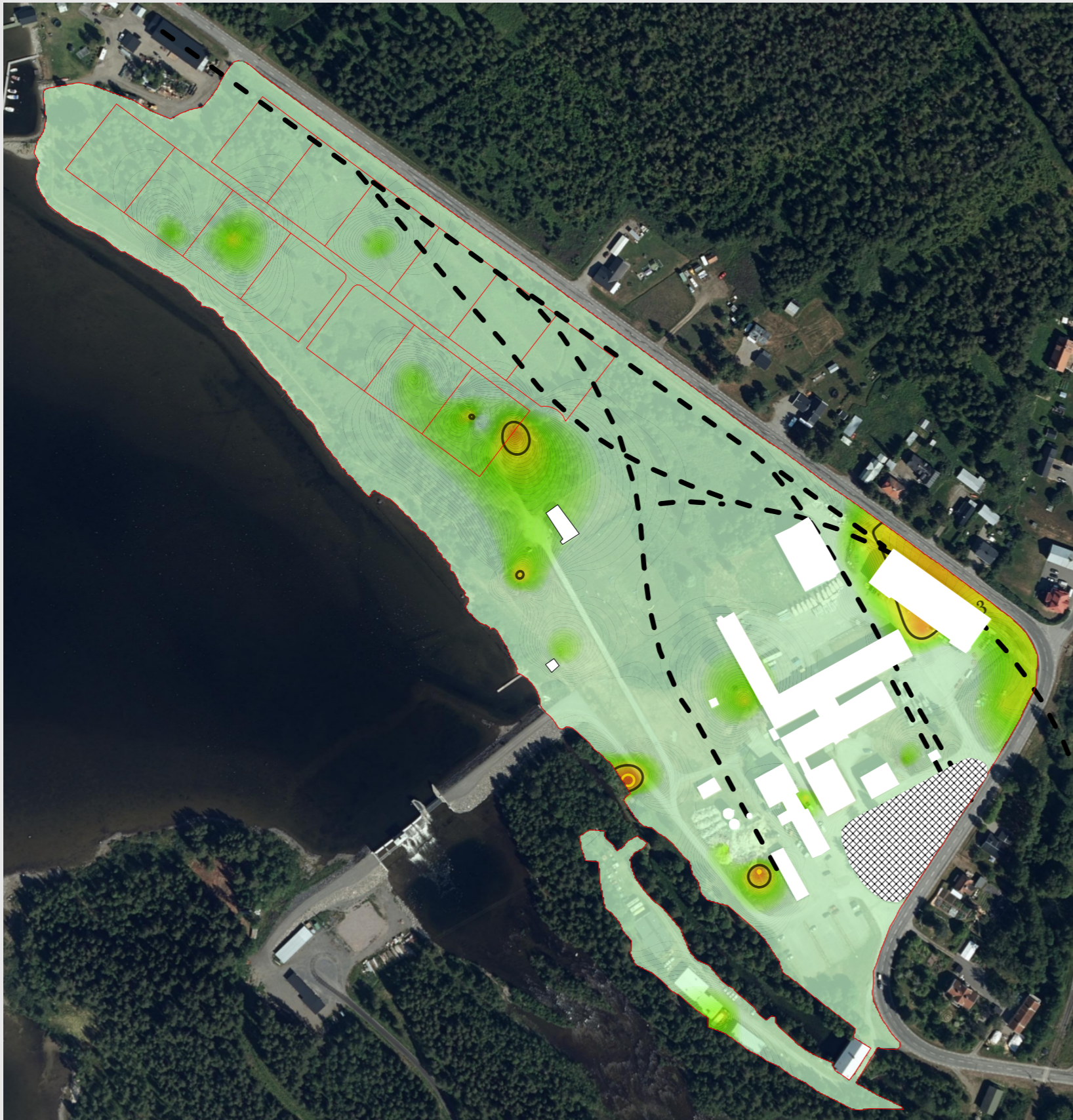


 Skala 1:3 000	Projektnummer: Beställare: Strömsund kommun
	Koordinatsystem: SWEREF 99 TM Provtagningsdatum:
2021-05-03 Peder Englund	Höjdsystem: RH2000

# Ulriksfors f.d. sulfittfabrik




As(kvadratrot) 0,5 m och djupare



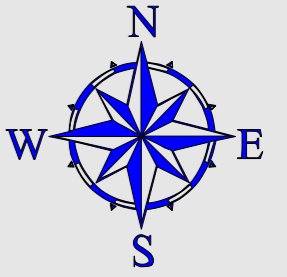
--- Gamla järnvägsspår

 Tidigare sanerat område

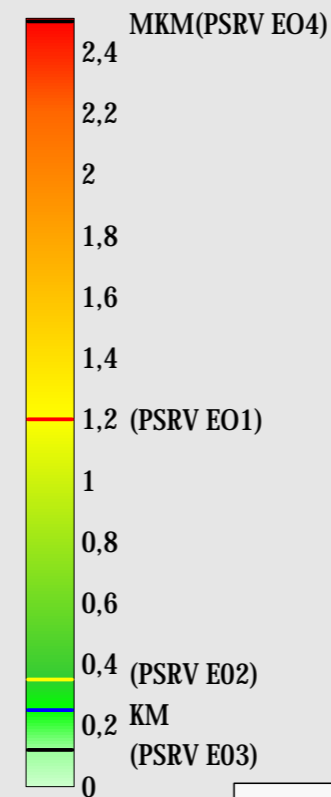
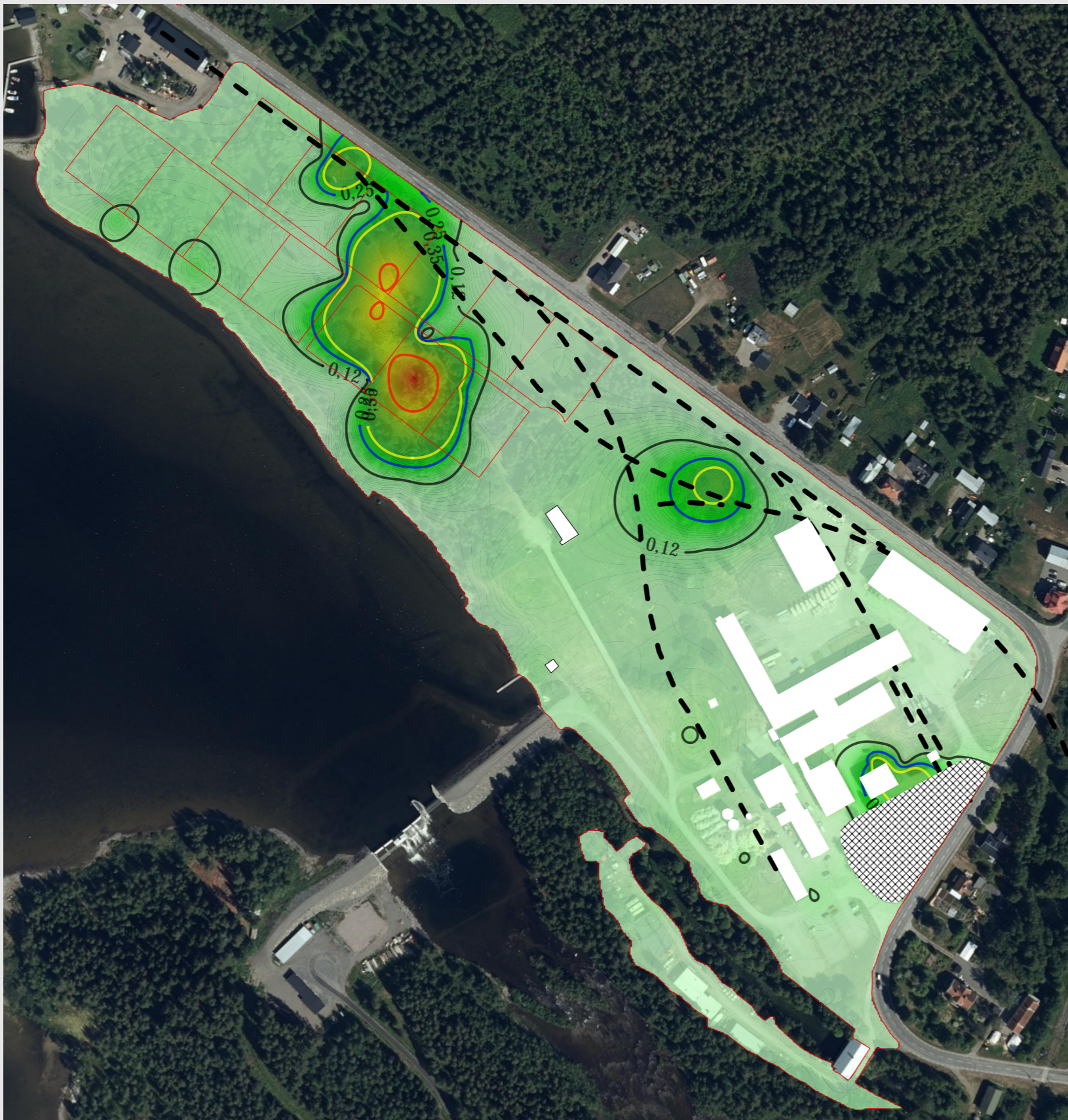
(PSRV E01)  
MKM(PSRV E04)  
KM (PSRV E02,E03)

 Skala 1:3 000	Projektnummer: Beställare: Strömsund kommun
	Koordinatsystem: SWEREF 99 TM Provtagningsdatum:
2021-05-03 Peder Englund	Höjdsystem: RH2000

# Ulriksfors f.d. sulfittfabrik




Hg 0- 0,5 m

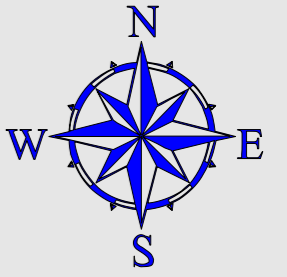


--- • Gamla järnvägsspår

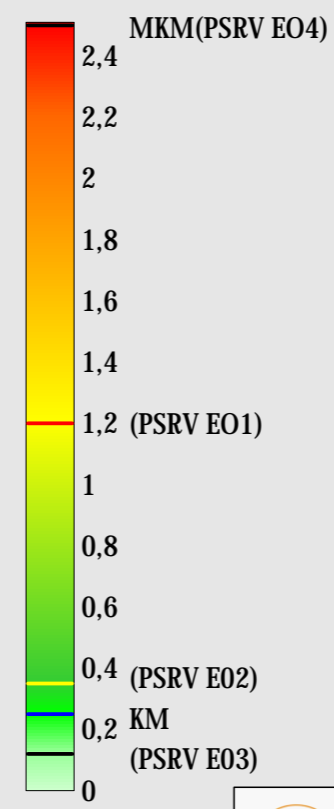
 Tidigare sanerat område


 <b>ENVIX</b> www.envix.se	Projektnummer:
	Beställare: Strömsund kommun
Skala 1:3 000	Koordinatsystem: SWEREF 99 TM
	Provtagningsdatum:
2021-05-03 Peder Englund	Höjdsystem: RH2000

# Ulriksfors f.d. sulfittfabrik

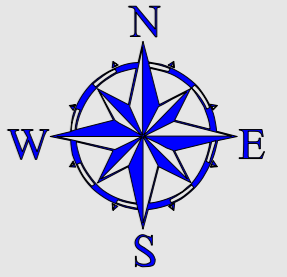


Hg 0,5 m och djupare

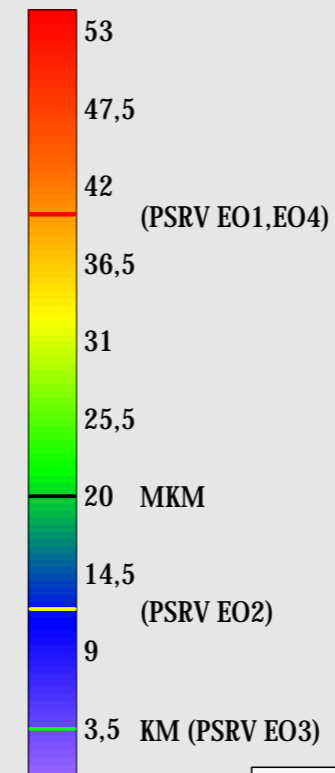
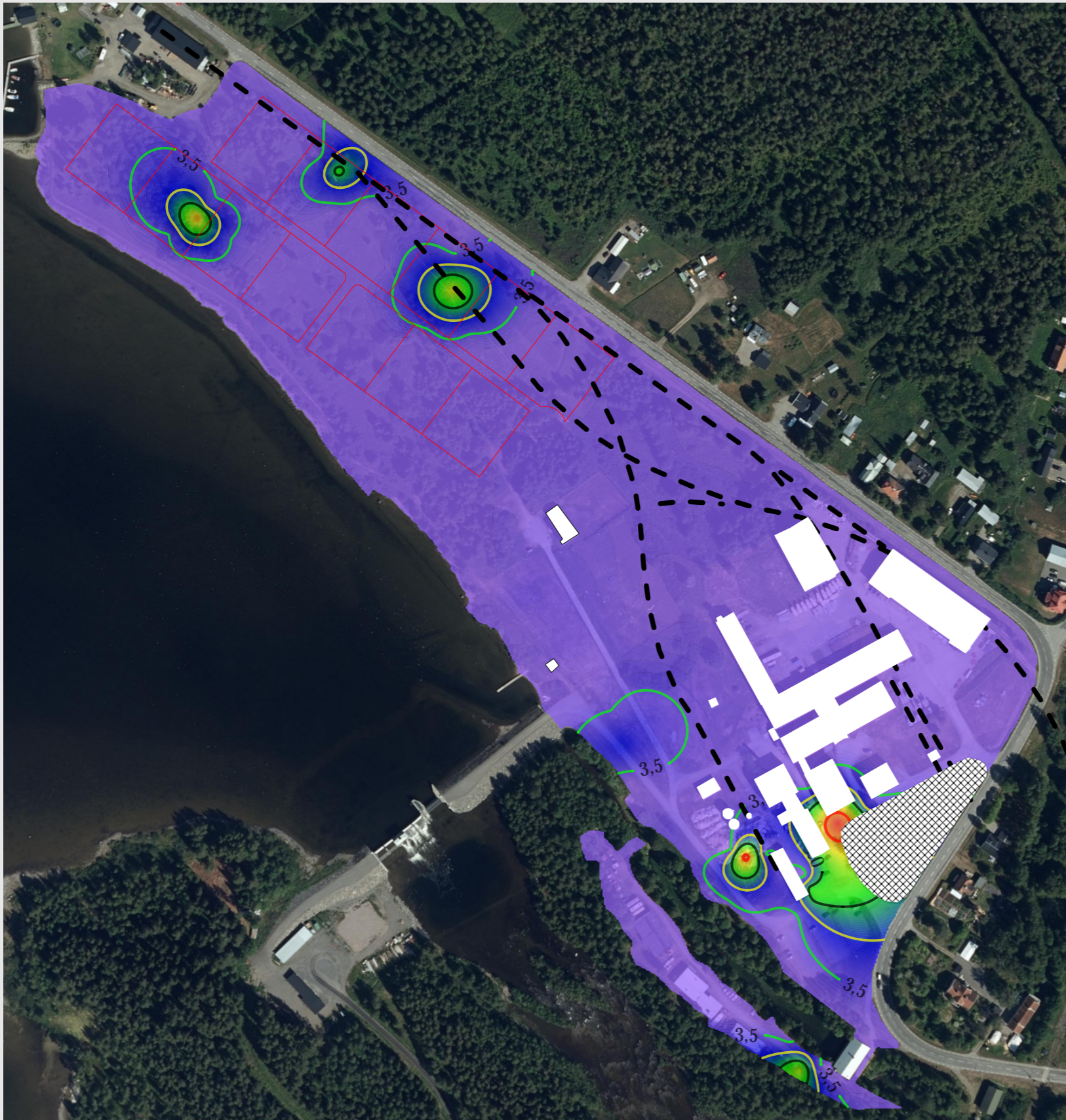


 Skala 1:3 000	Projektnummer:
	Beställare: Strömsund kommun
2021-05-03 Peder Englund	Koordinatsystem: SWEREF 99 TM
	Höjdsystem: RH2000

# Ulriksfors f.d. sulfittfabrik




Summa PAH med medelhög molekylvikt  
0-0,5 m

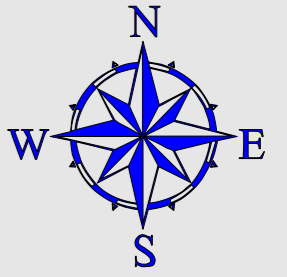


--- Gamla järnvägsspår

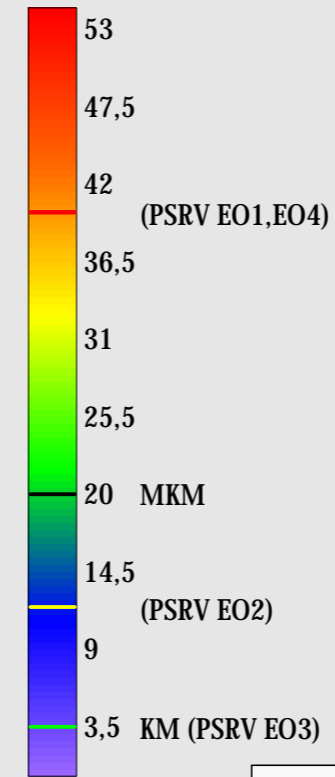
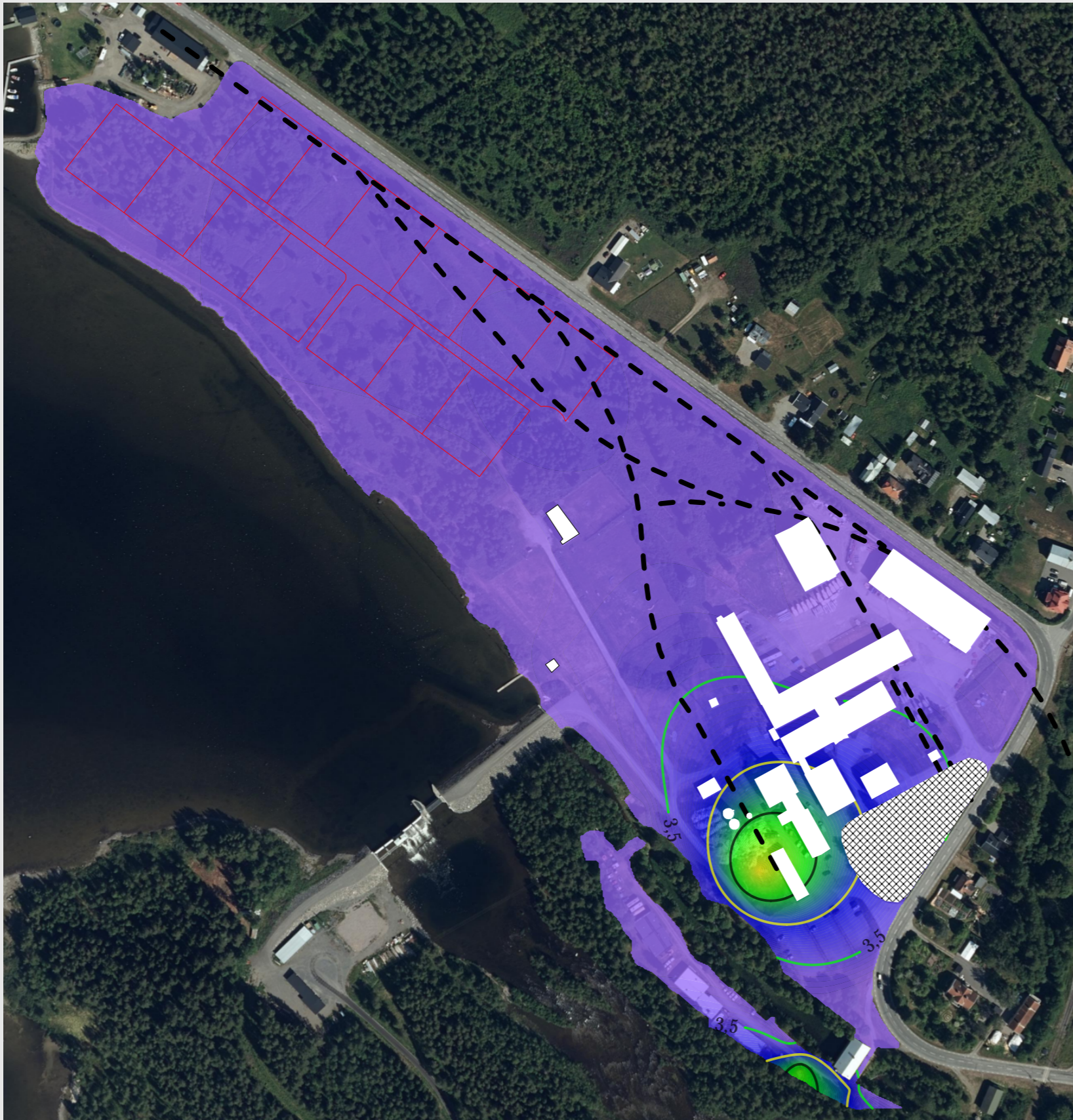
 Tidigare sanerat område

 <b>ENVIX</b> www.envix.se	Projektnummer:
	Beställare: Strömsund kommun
Skala 1:3 000	Koordinatsystem: SWEREF 99 TM
	Provtagningsdatum:
2021-05-03 Peder Englund	Höjdsystem: RH2000

# Ulriksfors f.d. sulfittfabrik




Summa PAH med medelhög molekylvikt  
0,5 - djupare



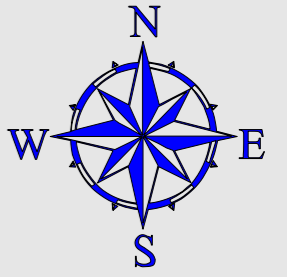
--- Gamla järnvägsspår

Tidigare sanerat område

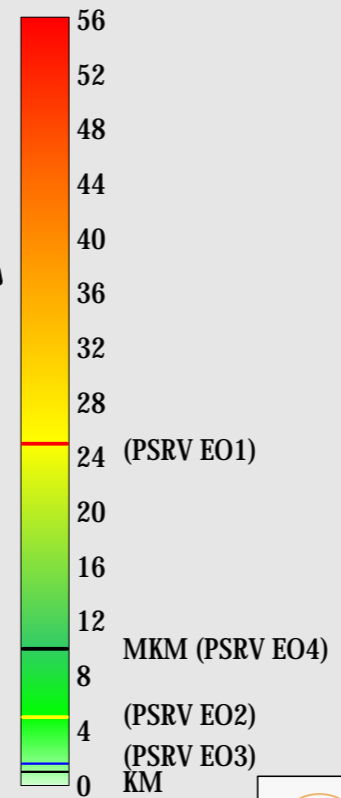
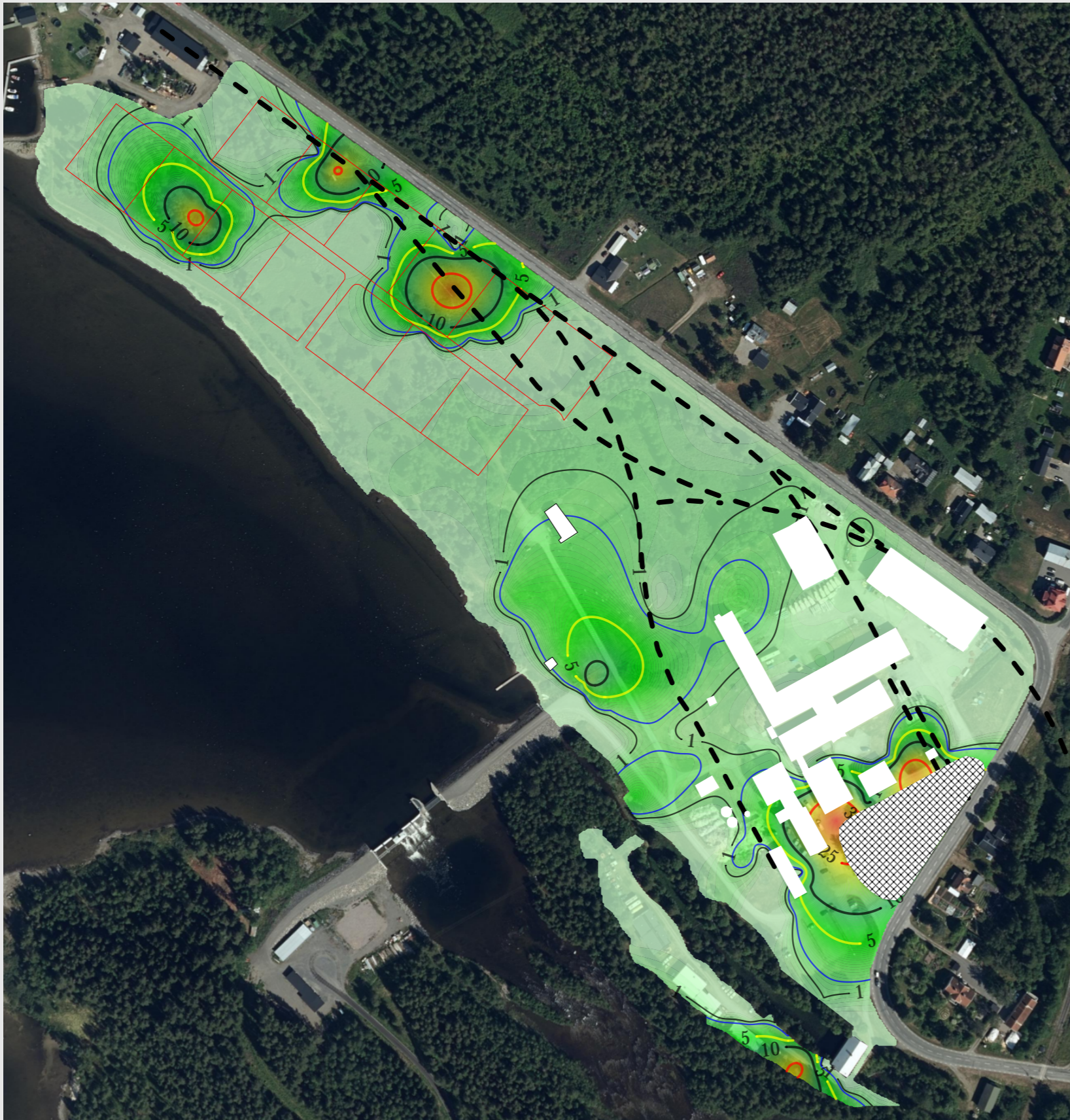
 Skala 1:3 000	Projektnummer: Beställare: Strömsund kommun
	Koordinatsystem: SWEREF 99 TM Provtagningsdatum:
2021-05-03 Peder Englund	Höjdsystem: RH2000



# Ulriksfors f.d. sulfittfabrik




Summa PAH med hög molekyelvikt  
0-0,5m

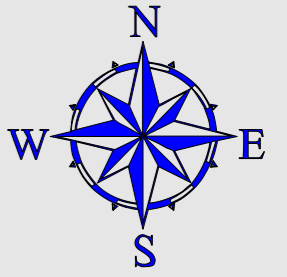


--- Gamla järnvägsspår

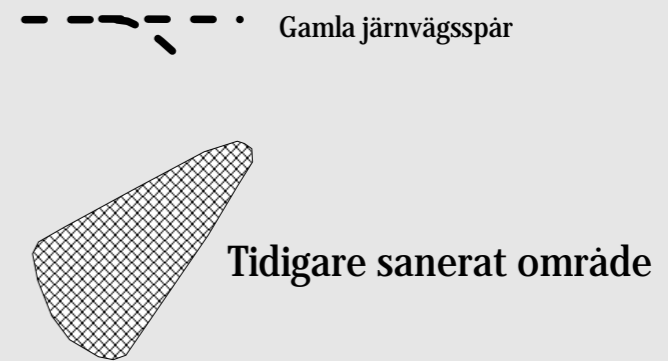
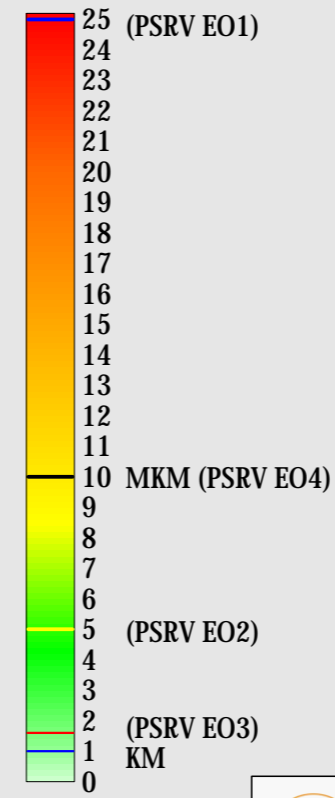
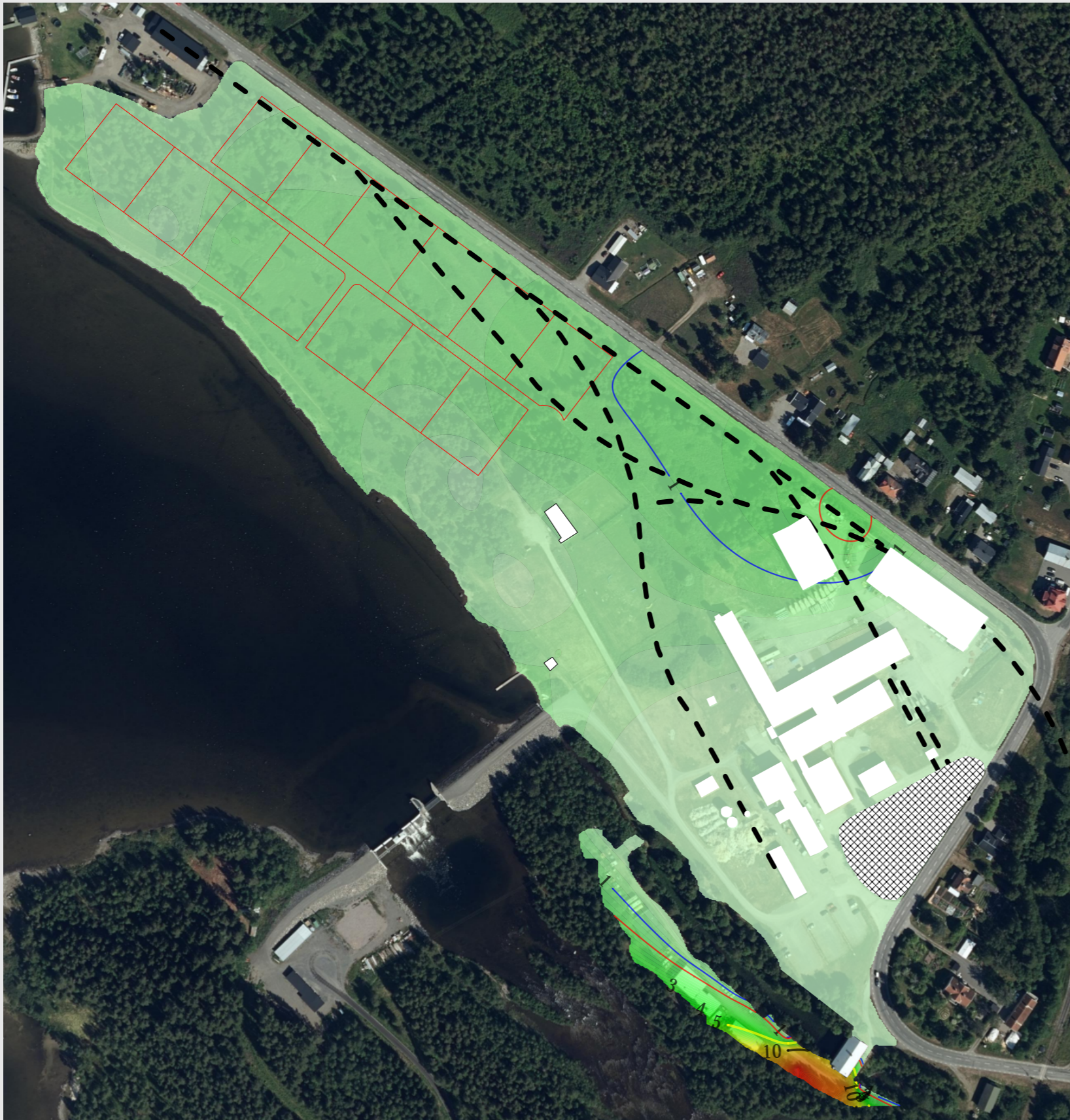
 Tidigare sanerat område


 Skala 1:3 000	Projektnummer:
	Beställare: Strömsund kommun
2021-05-03 Peder Englund	Koordinatsystem: SWEREF 99 TM
	Höjdsystem: RH2000

# Ulriksfors f.d. sulfittfabrik



Summa PAH med hög molekylvikt  
0,5 - djupare



	Projektnummer:
	Beställare: Strömsund kommun
Skala 1:3 000	Koordinatsystem: SWEREF 99 TM
	Provtagningsdatum:
2021-05-03 Peder Englund	Höjdsystem: RH2000